



13 Chapel Street, Bottesford,  
Leicestershire, NG13 0BY

**£340,000**  
Tel: 01949 836678

 **RICHARD  
WATKINSON  
PARTNERS**  
Surveyors, Estate Agents, Valuers, Auctioneers



We have pleasure in offering to the market this traditional, semi detached home which has been tastefully modernised throughout. As well as benefitting from a single storey addition to the rear the property occupies a central village location, literally yards from local amenities, with attractive views at the rear across to adjacent paddocks.

The property is likely to appeal to a wide audience being large enough to accommodate families but also a single person or professional couples or even those downsizing from larger dwellings who will appreciate its convenient location, within walking distance of the wealth of amenities.

The property offers versatile living comprising an initial enclosed storm porch leading through into an inner hallway and in turn the main sitting room with attractive feature fireplace and inset stove. The sitting room links through into a fitted kitchen with ground floor cloak room and utility area off and, in turn, opens out into a single storey addition which provides a fantastic everyday living/entertaining space, large enough to accommodate both living and dining areas, with access out into the rear garden. To the first floor there are three bedrooms and main bathroom.

As well as the internal accommodation the property occupies a pleasant plot with off road parking to the front and side. This leads down to a brick built garage which has been part converted, leaving a storage/workshop area to the front and a room at the rear which has been utilised as a "temporary office".

The rear garden affords a fantastic aspect across to an adjacent paddock and views of the village church. The garden is mainly laid to lawn with several terraces providing various seating areas throughout the day and provides a pleasant outdoor space.

Overall viewing comes highly recommended to appreciate both the location and accommodation on offer.

## **BOTTESFORD**

The village of Bottesford is well equipped with local

amenities including primary and secondary schools, a range of local shops, doctors and dentists, several public houses and restaurants, railway station with links to Nottingham and Grantham which gives a fast rail link to London's Kings Cross in just over an hour. The A52, A46 and A1 are also close by providing excellent road access.

A COMPOSITE ENTRANCE DOOR WITH DOUBLE GLAZED LIGHTS LEADS THROUGH INTO:

### **INITIAL ENCLOSED STORM PORCH**

6'10" x 4'8" (2.08m x 1.42m)

A useful space having wood effect laminate flooring, double glazed windows to the side elevations and a further double glazed door leading through into:

### **MAIN ENTRANCE HALL**

6'10" x 4'4" (2.08m x 1.32m)

Having central heating radiator, wood effect laminate flooring and staircase rising to the first floor landing.

A further door leads through into:

### **SITTING ROOM**

13'10" x 13' (4.22m x 3.96m)



A pleasant reception having aspect to the front, the focal point to the room being chimney breast with tiled hearth and inset solid fuel stove with timber mantel above,

alcoves to the side, coved ceiling, wood effect laminate flooring and central heating radiator.

A further door leading through into:



### **KITCHEN**

14'3" x 9'1" (4.34m x 2.77m)



Being open plan to a single storey addition at the rear which, combined, creates a fantastic everyday



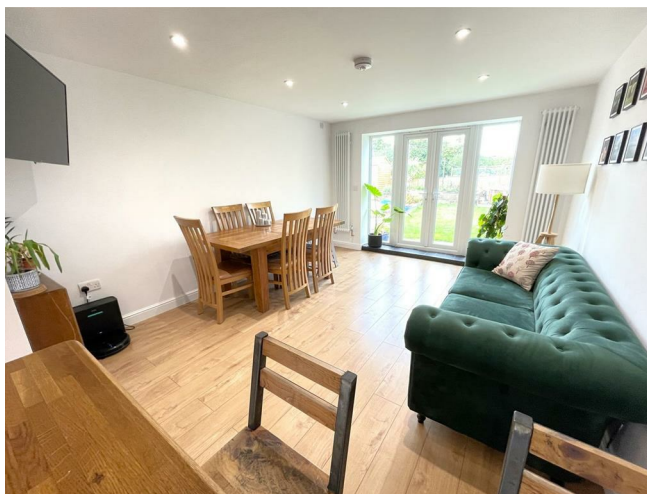
living/entertaining space with access out into the rear garden and views across an adjacent paddock. The kitchen is tastefully appointed with a generous range of Shaker style wall, base and drawer units with brush metal fittings, having a U shaped configuration of preparation surfaces, inset stainless steel sink and drain unit with chrome swan neck mixer tap and metro style tiled splash backs, space for free standing gas or electric range with chimney hood over, plumbing for dishwasher, inset downlighters to the ceiling and wood effect laminate flooring.

A large open doorway leads through into:



### LIVING/DINING SPACE

14'7" x 11'10" (4.45m x 3.61m)



A useful addition to the property providing a further versatile reception area large enough to accommodate both living and dining having double glazed side lights and French doors leading out into the rear garden and pleasant views across to an adjacent paddock beyond. In addition the room having continuation of the wood effect laminate flooring, inset downlighters to the ceiling and two contemporary column radiators



### UTILITY AREA

4'4" x 4'4" (1.32m x 1.32m)

Leading off the kitchen and having fitted wall units, preparation surface and tiled splash backs, central heating radiator and electrical consumer unit.

RETURNING TO THE KITCHEN A FURTHER DOOR LEADS TO:

## GROUND FLOOR CLOAK ROOM

6'5" x 4' (1.96m x 1.22m)



Having a two piece suite comprising close coupled WC and pedestal washbasin, vanity surface with storage cupboard beneath and central heating radiator.

RETURNING TO THE MAIN ENTRANCE HALL A STAIRCASE RISES TO:

## FIRST FLOOR LANDING



Having access to loft space above and double glazed window to the side.

Further doors leading to:

## BEDROOM 1

12'8" x 10'5" into wardrobes (3.86m x 3.18m into wardrobes)



A double bedroom having aspect to the front with a run of

wardrobes, hanging rails and storage cupboard over, a further built in cupboard which also houses the gas central heating boiler, central heating radiator and double glazed window.

## BEDROOM 2

10'3" x 9'4" (3.12m x 2.84m)



A further double bedroom having a fantastic aspect to the rear across to an adjacent paddock with central heating radiator and double glazed window.



### BEDROOM 3

9'5" x 8' (2.87m x 2.44m)



Having an aspect to the front with central heating radiator, over stairs bulkhead and double glazed window.

### BATHROOM

8' x 5'3" (2.44m x 1.60m)



Having a suite comprising P shaped shower bath with chrome taps and further wall mounted shower mixer with both independent handset and rainwater rose over and

glass screen, mid flush WC and washbasin, contemporary towel radiator and double glazed window.

### EXTERIOR



The property occupies a prominent position in the centre of the village, tucked back behind a walled frontage with open gateway leading onto a resin and stone chipping driveway providing off road car standing, sleeper edged borders and continuation of the driveway to the side which leads to a brick built former garage. A timber courtesy gate gives access into the rear garden and in turn the rear of the former garage. the rear garden is partly lawned having an initial paved terrace leading off the reception area of the kitchen, further raised seating area, timber edged borders with established shrubs, enclosed by feather edged board and panelled fencing and also encompassing a useful timber storage shed.







### WORKSHOP/STORAGE AREA

10'9" deep x 8'7" wide (3.28m deep x 2.62m wide)

The former garage has been subdivided to provide a workshop/storage area to the front having electric up an over door, power and light and plumbing for washing machine.

### OFFICE SPACE

11'4" x 7'7" (3.45m x 2.31m)



The rear of the former garage which has been utilised as a temporary office space having power and light, inset downlighters to the ceiling, wall mounted air conditioning unit, wood effect laminate flooring and double glazed window to the rear.

### COUNCIL TAX BAND

Melton Borough Council - Band C

### TENURE

Freehold

### ADDITIONAL NOTE

The property is understood to have mains drainage, electricity, gas and water (information taken from Energy performance certificate and/or vendor).

Please note the garage has been part converted retaining an initial workshop/storage area to the front with the rear having been boarded out to create what is a "temporary space". Although we understand this has been insulated and plaster boarded to provide a useful space it doesn't have building certification and therefore cannot be considered to be "permanent accommodation".

Single storey extension is pending final sign off.

The property lies within the village conservation area.

### ADDITIONAL INFORMATION

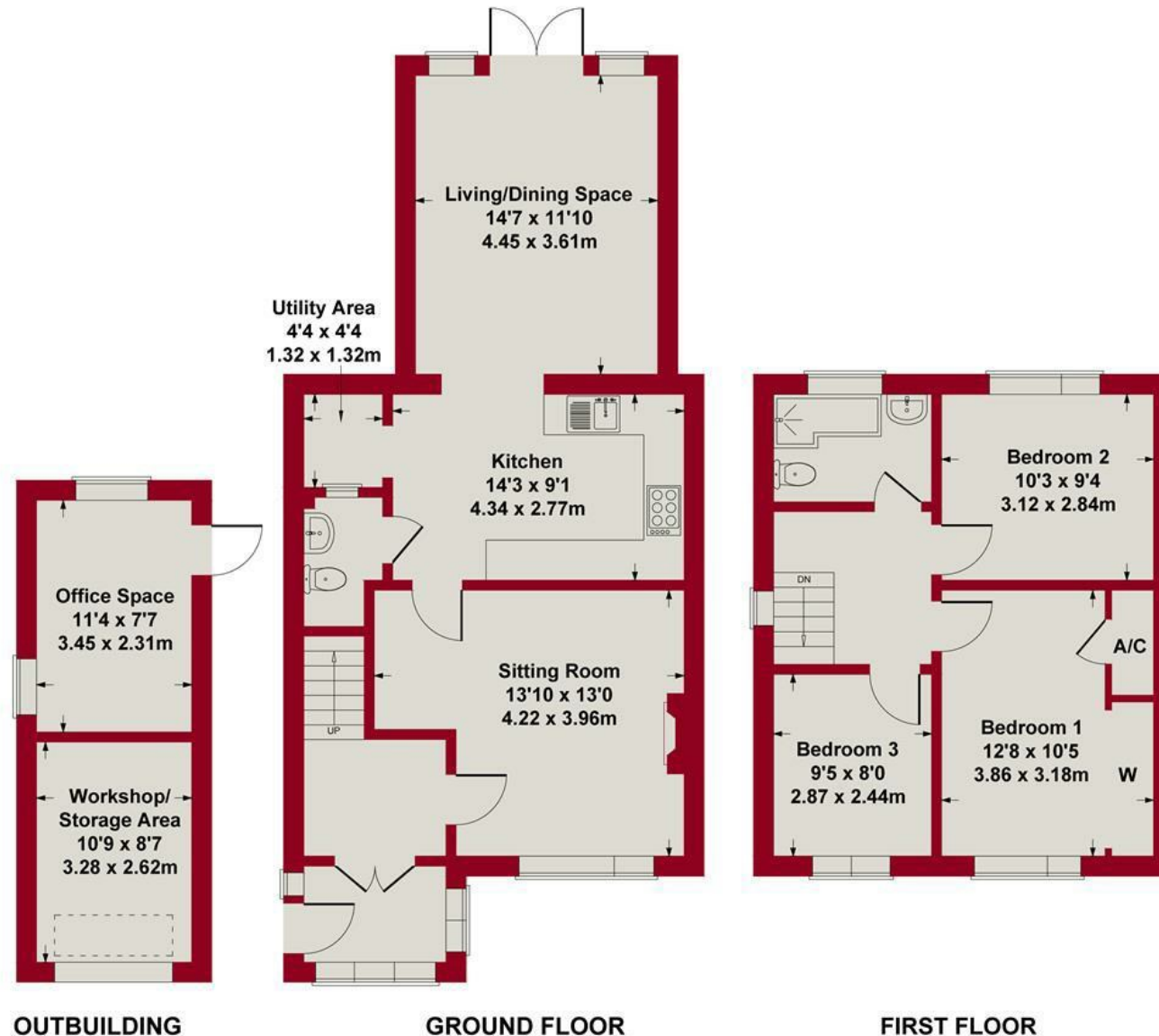
Please see the links below to check for additional information regarding environmental criteria (i.e. flood assessment), school Ofsted ratings, planning applications and services such as broadband and phone signal. Note Richard Watkinson & Partners has no affiliation to any of the below agencies and cannot be responsible for any incorrect information provided by the individual sources.

Flood assessment of an area: <https://check-long-term-flood-risk.service.gov.uk/risk#>

Broadband & Mobile coverage: - <https://checker.ofcom.org.uk/en-gb/broadband-coverage>

School Ofsted reports: - <https://reports.ofsted.gov.uk/>

Planning applications: - <https://www.gov.uk/search-register-planning-decisions>

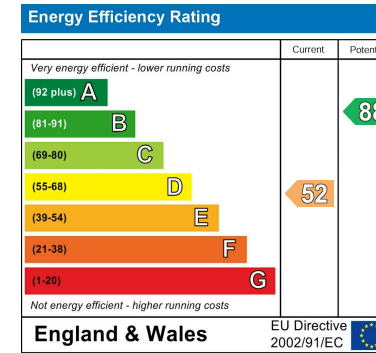


**SKETCH PLAN FOR ILLUSTRATIVE PURPOSES ONLY**

All measurements walls, doors, windows, fittings and appliances, their sizes and locations, are approximate only. They cannot be regarded as being a representation by the seller, nor their agent.







*These particulars, whilst believed to be accurate are set out as a general outline only for guidance and do not constitute any part of an offer or contract. Intending purchasers should not rely on them as statements of representation of fact, but must satisfy themselves by inspection or otherwise as to their accuracy. No person in this firm's employment has the authority to make or give any representation or warranty in respect of the property. Any fixtures and fittings not mentioned in these details are excluded from the sale price. No services or appliances which may have been included in these details have been tested by the selling agent and therefore cannot be guaranteed to be in good working order.*

*As part of the service we offer we may recommend ancillary services to you such as mortgage advice, solicitors and surveyors which we believe will help with your property transaction. We wish to make you aware that should you decide to proceed we may receive a referral fee or equivalent. This could be a fee, commission, payment or other reward. We will not refer your details unless you have provided consent for us to do so. You are not under any obligation to provide us with your consent or to use any of these services. You are also free to choose an alternative provider.*

Thinking of selling? For a FREE no obligation quotation call 01949 836678



**RICS**



Richard Watkinson & Partners is the trading name of Richard Watkinson Ltd.  
Registered in England. Ltd Registration number: 07140024

10 Market Street,  
Bingham NG13 8AB  
Tel: 01949 836678  
Email: [bingham@richardwatkinson.co.uk](mailto:bingham@richardwatkinson.co.uk)



Surveyors, Estate Agents, Valuers, Auctioneers